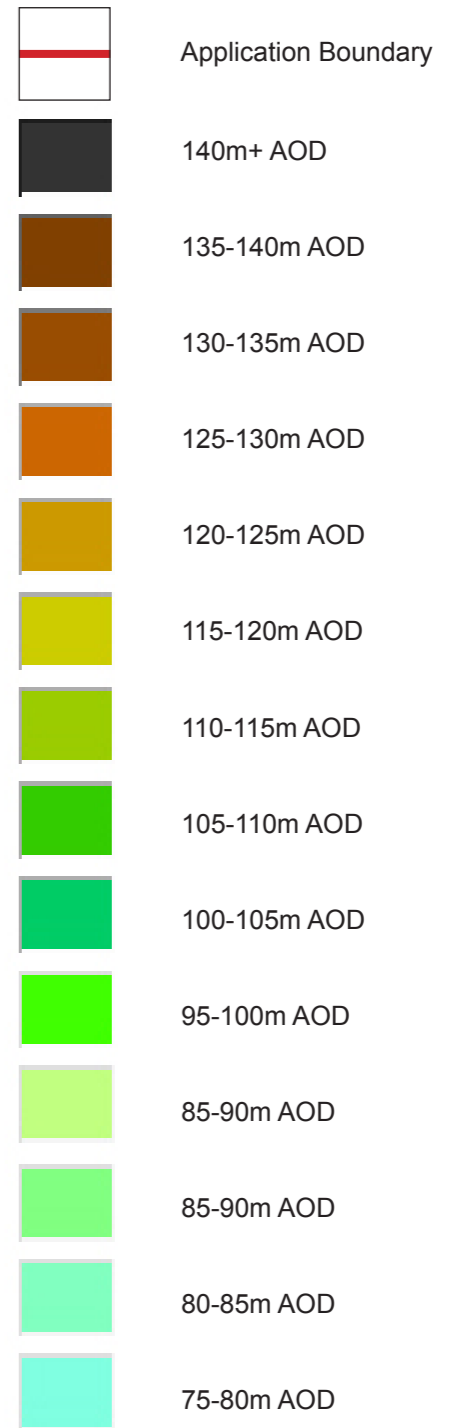
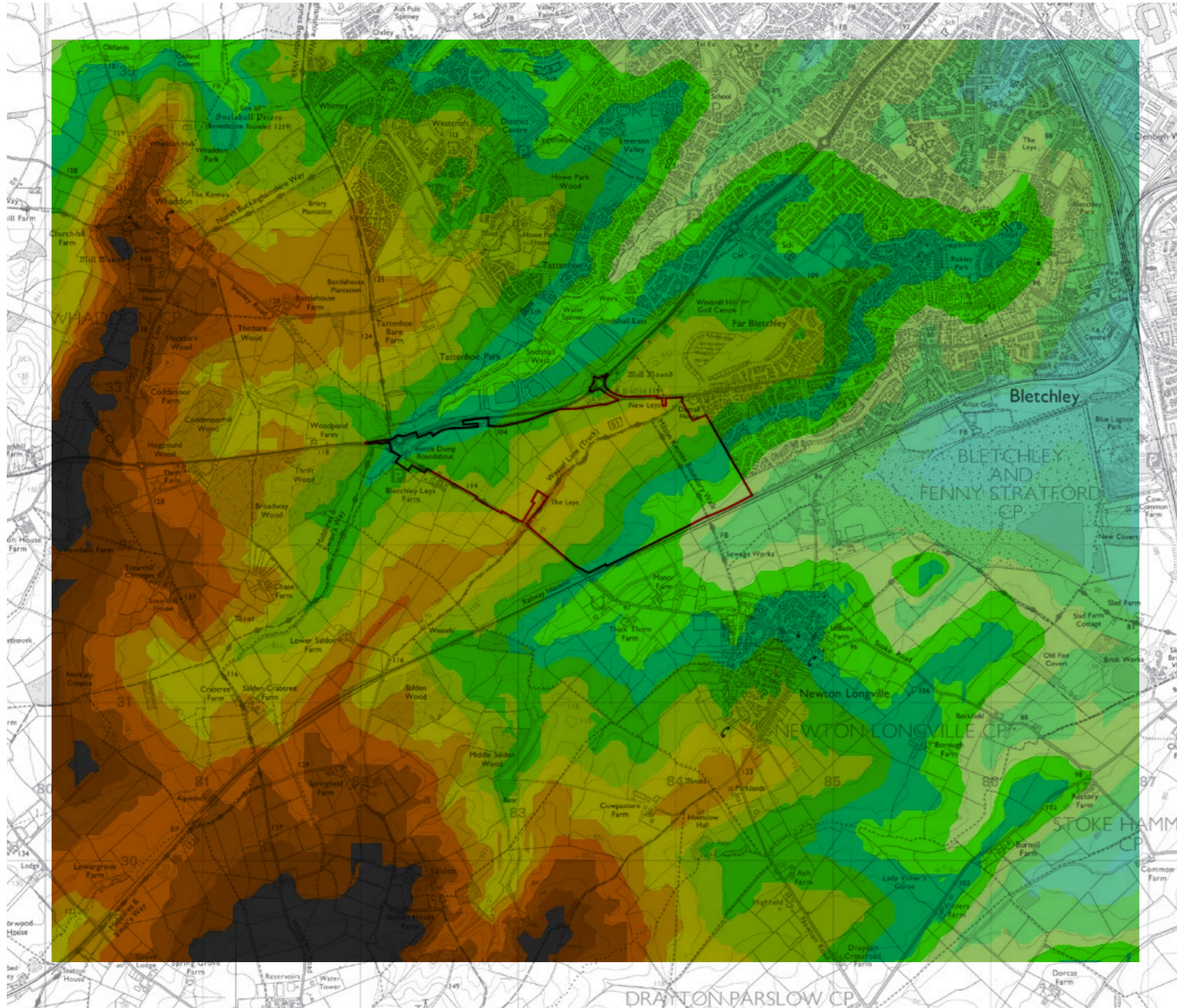


This drawing is the property of FPCR Environment and Design Ltd and is issued on the condition it is not reproduced, retained or disclosed to any unauthorised person, either wholly or in part without written consent of FPCR Environment and Design Ltd.

Ordnance Survey material is used with the permission of The Controller of HMSO, Crown copyright 100018896.



Hallam Land Management
 South West Milton Keynes
 TOPOGRAPHY PLAN

1:25,000 @ A3 HM/KMN September 2014
Figure 9.2