



Amendments

Issue No.	Date	Description
-	-	-
-	-	-


Job No. **J2500** Survey Date **JULY-NOV 2008**

Client
CgMs CONSULTING LTD

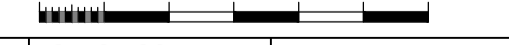
Project Title
SOUTH WEST MILTON KEYNES

Subject
**PLOT OF PROCESSED
GRADIOMETER DATA**

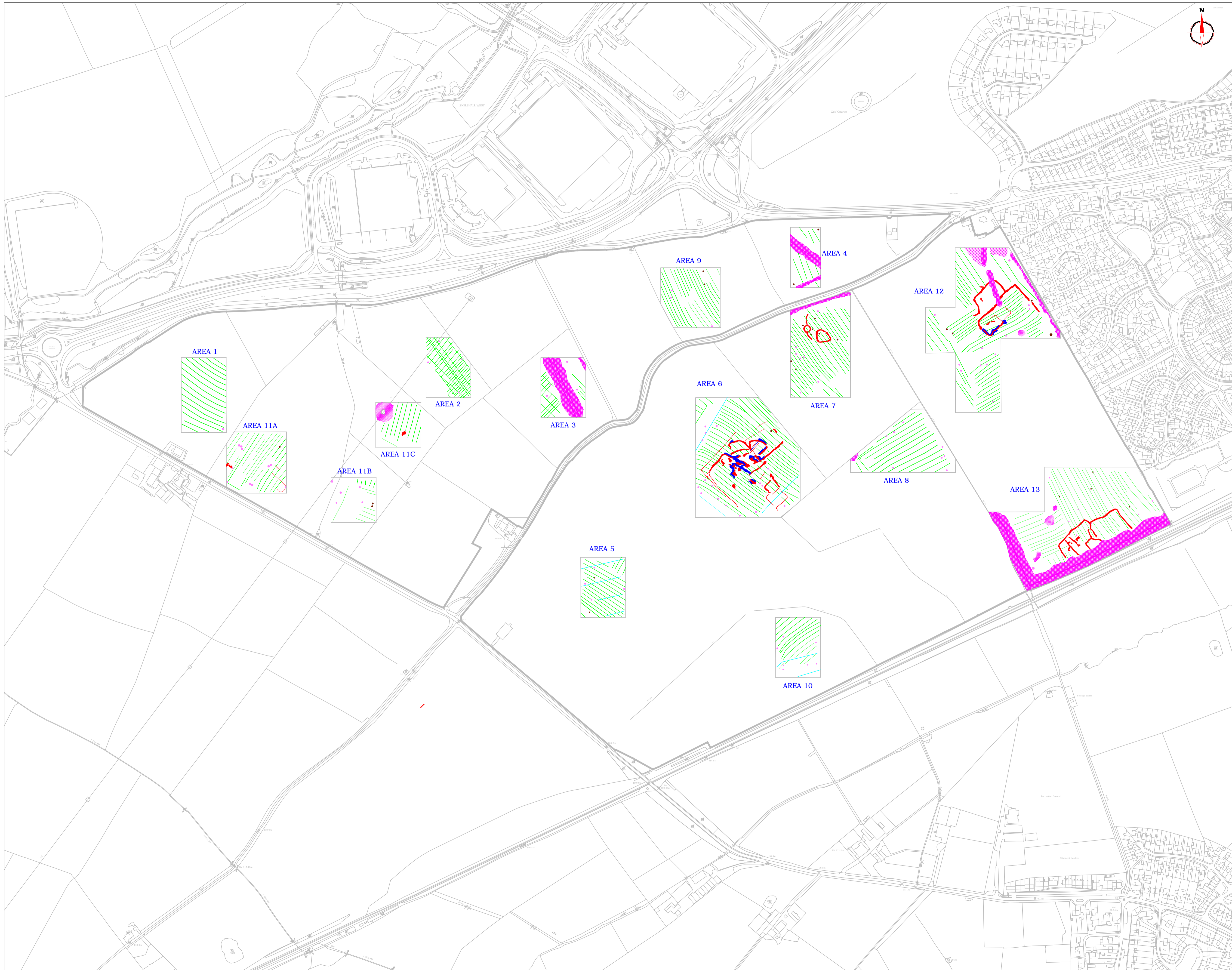
STRATASCAN™
 GEOPHYSICS FOR ARCHAEOLOGY
 AND ENGINEERING
 VINEYARD HOUSE
 UPPER HOOK ROAD
 UPTON UPON SEVERN
 UK
 WR8 0SA
 T: +44 (0)1684 592266
 F: +44 (0)1684 594142
 E: info@stratascan.co.uk
 www.stratascan.co.uk



Scale
1:3500



Plot A1	Checked by PPB	Issue No. 02
Date OCT 14	Drawn by CG	Figure No. 30



Amendments		
Issue No.	Date	Description
-	-	-
-	-	-
-	-	-

KEY	
	Discrete positive anomaly - possible pit
	Positive anomaly with associated negative response - ferrous object
	Magnetic disturbance - associated with pipe/cable
	Linear anomaly - agricultural mark
	Positive linear anomaly - cut feature of possible archaeological origin
	Negative linear anomaly - bank or earthwork of possible archaeological origin
	Linear anomaly - possibly related to land drains
	Positive area anomaly - cut feature of possible archaeological origin
	Negative area anomaly - bank or earthwork of possible archaeological origin
	Weak positive area anomaly
	Weak negative area anomaly
	Magnetic disturbance associated with nearby service or field boundary
	Magnetic disturbance associated with nearby metallic objects
	Magnetic debris
	Area of magnetic variation - possible geological/pedological response
	Area of positive response associated with path
	Positive linear anomaly - cut feature possibly relating to former field boundary

Job No.	J2500	Survey Date	JULY-NOV 2008
Client	CgMs CONSULTING LTD		
Project Title	SOUTH WEST MILTON KEYNES		
Subject	ABSTRACTION AND INTERPRETATION OF GRADIOMETER ANOMALIES		

STRATASCAN
 GEOPHYSICS FOR ARCHAEOLOGY
 AND ENGINEERING
 VINEYARD HOUSE
 UPPER HOOK ROAD
 UPTON UPON SEVERN
 UK
 WR8 0SA
 T: +44 (0)1684 592266
 F: +44 (0)1684 594142
 E: info@stratascan.co.uk
 www.stratascan.co.uk

Scale	1:3500		
Plot	A1	Checked by	PPB
Date	OCT 14	Drawn by	CG
Issue No.	02	Figure No.	31

